

4400 Series

STINGER 4485

4485 Capacity and Range Chart:

GRADE A U T O M A T I C C O N T R O L L E D	LOAD RATINGS IN LBS. WITH OUTRIGGERS EXTENDED					AREA OF OPERATION
	BOOM ANGLE	BOOM LENGTH	BOOM ANGLE	BOOM LENGTH	BOOM ANGLE	
	27 FT	42 FT	56 FT	70 FT	85 FT	
5	77	44000				
8	70	31300	78	27000		
10	65	26350	75	25000		
12	60	22700	72	21425	77	18575
14	55	19900	69	18675	75	16100
16	50	17600	66	16550	72	14175
20	37	13800	60	13400	68	11375
25	10	8000	51	10650	62	9000
30			42	8600	57	7325
35			30	6700	50	6900
40			8	3650	43	5775
45					34	4550
50					24	3525
55						
60						
65						
70						
75						
80						
	700	500	350	300	250	← STOWED JIB DEDUCTIONS

JIB CAPACITIES FOR ALL BOOM LENGTHS									
CAPACITY ALERT SYSTEM, IF SO EQUIPPED, IS NOT FUNCTIONAL WHEN LIFTING WITH JIB									
LOADED BOOM ANGLE	50°	55°	60°	65°	70°	75°	78°	80°	
RETRACTED 26 FT JIB	0° OFFSET	850	1025	1525	2325	3225	4325	4925	5325
	15° OFFSET	600	750	925	1375	1750	2000	2000	2000
	30° OFFSET	500	600	675	975	1175	1275	1275	1275
EXTENDED 40 FT JIB	0° OFFSET	525	725	1125	1525	2025	2525	2825	3125
	15° OFFSET	450	525	675	850	1025	1100	1100	1100
	30° OFFSET	400	450	550	650	750	750	750	750

NOTE: Please consult the Terex Cranes full-line brochure for a complete listing of standard features and optional equipment.

4485 Optional Mounting Configurations:

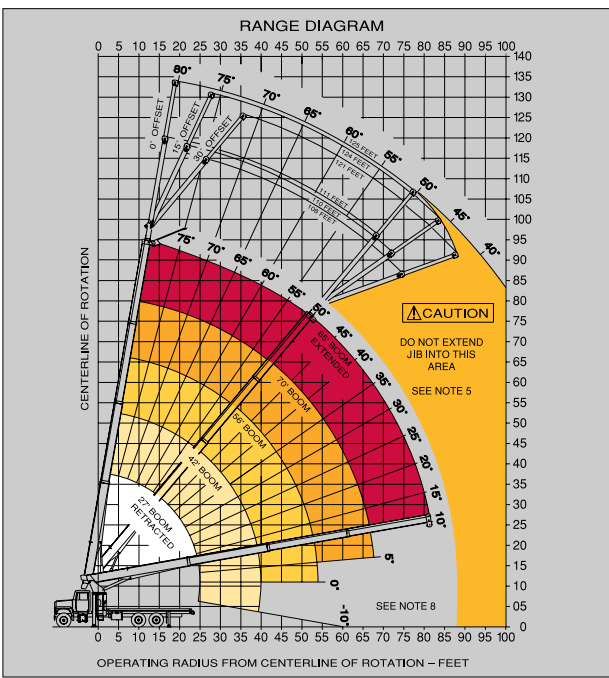
- Behind Cab (TC)
- Rear Mount (RM)

(Some standard features for the optional mounting configurations will vary. Please consult your Terex Cranes dealer or factory for chassis and mounting requirements.)

TC 4485 Minimum Chassis Requirements:

Chassis specifications are minimum for truck-crane mount. Not applicable to optional mounting configurations.

- Gross Vehicle Weight Rating 52,000 lbs. (23,587 kg)
- Front Axle Weight Rating 18,000 lbs. (8,165 kg)
- Rear Axle Weight Rating 34,000 lbs. (15,422 kg)
- Wheelbase 246 in. (6,248 mm)
- Cab To Axle 168 in. (4,267 mm)
- Afterframe 100 in. (254 mm)
- Transmission Heavy-Duty 6-Bolt PTO (Neutral lock-up required for automatic transmission)
- Electrical System Heavy-Duty
- Cooling System Heavy-Duty
- Frame Section Modulus 26 in.³ (426 cm³)
- RBM Per Frame Rail 2,860,000 in./lbs. (32,955 kg-m)



NOTE: Diagrams depict recommended mounting dimensions. The dimensions of optional mounting configurations will vary. Please consult your dealer or Terex Cranes for specifics. Dimensions do not include load deflection.

Rope and Reeving:

1 PART LINE	2 PART LINE	3 PART LINE	4 PART LINE	5 PART LINE	CAUTION
LOADS UP TO 9,600 LBS. STD. CABLE	LOADS UP TO 19,200 LBS. STD. CABLE	LOADS UP TO 28,800 LBS. STD. CABLE	LOADS UP TO 38,400 LBS. STD. CABLE	LOADS UP TO 48,000 LBS. STD. CABLE	
LOADS UP TO 6,720 LBS. ROT. RESIST. CABLE	LOADS UP TO 13,440 LBS. ROT. RESIST. CABLE	LOADS UP TO 20,160 LBS. ROT. RESIST. CABLE	LOADS UP TO 26,880 LBS. ROT. RESIST. CABLE	LOADS UP TO 33,600 LBS. ROT. RESIST. CABLE	

THIS MACHINE COMPLIES WITH OSHA REGULATIONS 1910.140 AND 1926.550 WHERE APPLICABLE AT DATE OF MANUFACTURE

